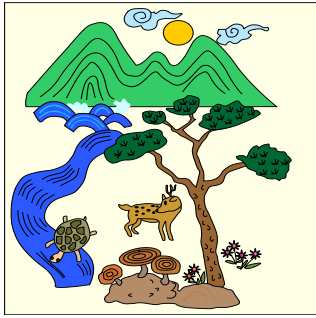


WHO POOPED IN THE WOODS? A MAMMAL MYSTERY



JUNE 18, 2020
JULY 2, 2020
JULY 16, 2020
JULY 24, 2020 (GRAND LAKE)



Rocky
Mountain
Conservancy
FIELD INSTITUTE

COURSE LEVEL: II
COURSE #S: S6031, S6032, S6033, S6034

FEE FREE FOR CHILDREN AGES 6-9

INSTRUCTOR: FELLOWS

PAGE 1 OF 2

TIME: 9:00 AM – Noon

LOCATION FOR JUNE 18, JULY 2 AND JULY 16 CLASSES: Lily Lake - Take Hwy. 7 heading south out of Estes Park. Approximately five miles out of town and across from Twin Sisters Trailhead is Lily Lake. Meet the instructor by the picnic tables near the parking lot.

LOCATION FOR JULY 24 CLASS: Trail River Ranch - Trail River Ranch is located on a small unmarked gravel road on HWY 34. It is located between the Coyote Valley Trailhead to the north and the Onahu Creek Trailhead to the south, approximately two miles inside Rocky Mountain National Park from the west entrance (Kuwanechee Visitor Center). The unmarked gravel road is made visible by two pedestrian crossing signs. Trail River Ranch is reached by following this road to a small parking lot. At the small parking lot, turn left and go through the gate. Trail River Ranch is at the end of this one-way road. **Map on last page of syllabus.**

COURSE DESCRIPTION: Who doesn't love a good mystery? *Who Pooped in the Woods?* will have you solving real-life mysteries from start to finish. You'll learn how to recognize different animal signs like scat (a fancy word for "poop") and tracks, and you'll get to take home your very own cast of an animal track!

COURSE LEVEL: II

Short-distance walks throughout the day primarily on level terrain.

TENTATIVE SCHEDULE: During our time together, we'll be walking and stopping to look at a variety of animal tracks and signs along the way. We'll also have plenty of hands-on activities to keep all our young detectives on their toes! Please make sure to bring snacks and water.

REMEMBER TO BRING:

- Water to drink
- Snacks
- Rain gear
- Good shoes for walking (no flip-flops)
- Your curiosity!

REFUND POLICY:

Cancellations received at least 14 days prior to the start of a class will qualify for a refund minus a cancellation fee of \$25 per participant for a one-day class, \$50 for a multi-day class, \$5 per kid's class and \$15 per half-day class or bus tour seat. Registration money transferred to another class will be subject to a \$10 switch fee. Cancellations received less than 14 days prior to the start of a class or bus tour will not generate a refund. If the Field Institute cancels a class, every effort will be made to place the participant in another class; otherwise, a full refund will be given.

TRAIL RIVER RANCH MAP

